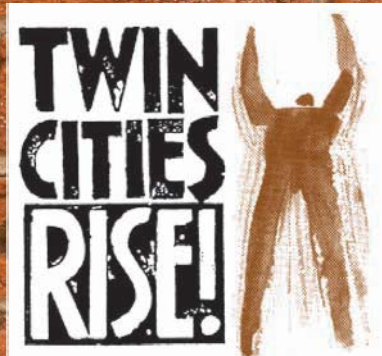


Twin Cities RISE!
2010 Annual Report



***Built on a
Strong
Foundation***



The mission of Twin Cities RISE! is to provide employers with skilled workers— primarily men from communities of color in the Twin Cities area— by training under- and unemployed adults for skilled jobs that pay a living wage of at least \$20,000.

What makes **Twin Cities RISE!** succeed in such a difficult environment?

A strong foundation.

Market-Driven

Personal Empowerment

Outcomes-Focused

Reciprocal Accountability

Learning-Driven

Dear Friends,

Twin Cities RISE! (TCR!) managed through a difficult economy in 2010, meeting or exceeding all of its major objectives for the year: notably, placements and internships increased by 25%, and job retention remained at 82%. We ended the year with an operating surplus after carefully managing our resources. This report highlights these results and the stories of TCR! graduates who make our outcomes personal and meaningful.

These results are based on foundational values, including Reciprocal Accountability, Personal Empowerment, and being Market-Driven and Outcomes-Focused. Our values are unshakable and provide a strong foundation for success at all times, regardless of external circumstances.

Yet we are also changing. The desire to continuously improve is also a core value: we call it being Learning-Driven. It is the ability to constantly assess and adjust our approach so that we always meet the needs of our customers and stakeholders as effectively as possible. Belief in this value caused us to launch a self-funded Intern Program in the depths of recession, at a time when full-time employment opportunities were scarce. The program has grown to 100 interns per year in just two years, and is proving to be a powerful contributor to our participants' long-term employment success.

Now, with our state and national governments in fiscal crisis, there is much discussion and activity about "paying for performance." Bills are being introduced in several states and at the federal level that reflect this principle.

Living our Reciprocal Accountability value, Twin Cities RISE! has practiced Pay For Performance with the State of Minnesota since 1997. Over the last thirteen years, TCR! returned \$33.4 million in state taxpayer value for the \$4.6 million of state investment, or a 624% return on investment. We are proud that this model is the basis for much of the new legislation being proposed.

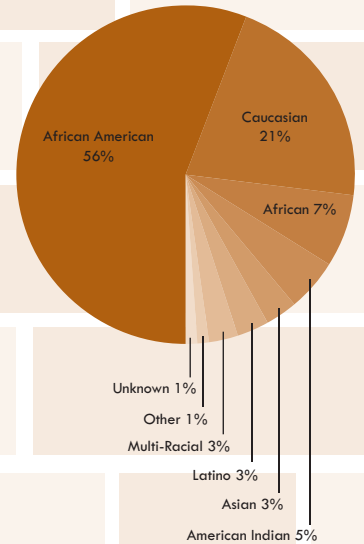
As we look ahead we are excited by the opportunities to serve our community and humbled by the challenges. We take comfort in the strength of our values-driven approach, the depth of support from our donors, and the amazing quality and dedication of our staff.

We thank you for your support.

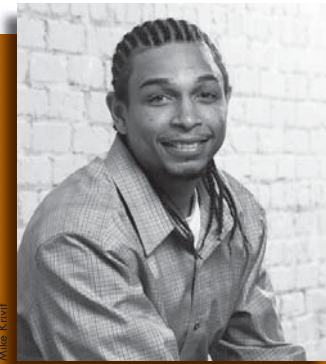
Steve Rothschild
Steve Rothschild
Founder & Board Chair

Art Berman
Art Berman
President & CEO

More than **2,000** served in all programs



67% Male
33% Female



Mike Keith

Cedric Taylor TCR! Graduate

"TCR! gave me the skills that showed me that the work environment can be a place you actually enjoy."

In January 2009, Cedric Taylor came to Twin Cities RISE! empty handed. He had lost nearly everything— his job, apartment, driver's license and car. Being on probation during the middle of the recession meant great difficulty in the job search, so a walk past the doors of Twin Cities RISE! piqued his interest.

"When I came in, I initially just wanted to find work," Cedric said. "But then, once I heard what the program was all about, I decided I could learn the skills I needed for a new line of work."

Cedric's previous employment had been in warehouses and factories, but he saw a chance for a new path through the training at Twin Cities RISE!. Eight months after coming to TCR!, Cedric found a full-time job with iQor, an international business processing outsourcing company. "It interests me, I like the work environment, and I'm doing well. And there's room for growth," Cedric said of his position.

As a Collections Agent, Cedric often uses Personal Empowerment skills to keep a positive attitude and remain professional while doing his job.

Cedric also found Twin Cities RISE! keyboarding class to be especially useful. Using a computer all day, he found that if he can type quickly, he can get to the next customer faster, and that's good customer service.

Now that Cedric has the foundation he needs, he hopes to go back to school for an associate degree in radiology and work in a hospital setting.

"I've got a place to stay now, I'm going to get my license back and I'm able to take care of my family," Cedric said. "[TCR!] made me want to do more in my personal life and be more involved in my family."



Mike Keith

Elsa Cardenas TCR! Graduate

"I went through the homelessness... the addiction, so I can really relate to [my clients]."

Elsa Cardenas was once a successful, self-employed business owner. But when drugs and addiction got in the way, her career and lifestyle disappeared. By the time she got sober and into transitional housing, she had been out of the professional world for 11 years. Though Elsa had computer skills, rapid changes in technology meant she was behind the times. "I was really nervous about getting back into the workforce," Elsa said.

Elsa came to Twin Cities RISE! looking to refresh her skills, but wasn't sure it would ultimately lead to full-time employment. "I didn't really believe I was going to get a job," Elsa said. "I had a criminal history, so I just didn't see it happening. But I came anyway."

While at Twin Cities RISE!, Elsa got an internship at St. Stephen's Human Services, and it was a natural fit. That experience led to part-time work and then finally a full-time job with benefits.

Elsa is now a Housing Case Manager at RESOURCE's Spectrum Community Mental Health. Not only did she

increase her marketable skills, Elsa also created a foundation for her future. She lives in a house, owns a vehicle and regularly sees her family.

"My relationship with my family has greatly improved," Elsa said.

Elsa's experience in Personal Empowerment classes helped her reclaim what she lost from her addiction. "I'm more confident now... I was just scared because of the road I traveled. That takes all your self-esteem away," Elsa said. "Now I know the type of skills I have, but I'm not boastful or egotistical about them. It's a totally different journey for me now."

Elsa hopes to use her employment as the building block to keep learning about a field that she is passionate about and continue to serve those in need.

"I can't believe it. The way it just happened, it was meant to be," Elsa said.

Twin Cities RISE! provides a 12-18 month work skills and Personal Empowerment training program for adults living in deep poverty that culminates in full-time, living wage jobs with benefits.

Job Retention **82%** one-year
71% two-year



Mike Krivik

Adults, left to right: Comanche, wife, Shan, mother, Annabelle
Kids, middle row, left to right: Kellan, Kendrick, Bryan
Kids, front row, left to right: Kyrell, Shaunna, Shannon, C.J.

Comanche Fairbanks

TCR! Graduate

“Empowerment helped me realize that I have all these skills and to be confident in them.”

Although Comanche Fairbanks graduated from Twin Cities RISE! with a full-time job, he can still be found in the TCR! offices on a daily basis. That’s because Comanche is now an employee of TCR!, recruiting people with stories like his own to the program.

Before coming to TCR!, Comanche was an alcoholic with little drive to succeed. “I didn’t really care what I was doing. I had no motivation. The whole time, I didn’t like where I was at but I didn’t try to get out of it.”

Comanche never graduated from high school. He got his GED and took classes at community and technical colleges, but never received a degree. “My work history was pretty sketchy and I didn’t know what I could do,” he said.

Comanche’s goal was simply to find a job where he didn’t have to interact with many people. His shy nature meant he preferred to stay in the background at work. But with a history of performing and singing, his employment coach

saw promise in Comanche for other jobs. “Being able to perform, be a team worker, be a leader—all these skills I had. And it just started clicking. I can do this,” he said.

Comanche is now a Recruiter and Personal Empowerment Facilitator with TCR!. “I have to relate to everybody. I give my story about how I was in the same position that a majority of them are in.”

With a wife and seven kids at home, Comanche has a full plate outside of work as well. Personal Empowerment was key to improving his family dynamics. “The change in home life is huge,” Comanche said. “I can pass along these tools I have to my kids so they can educate themselves better and not get in trouble.”

Comanche has been nominated for leadership roles in his tribal community, and hopes to teach others how to live Empowered lives. “I’ve gone from an alcoholic to a role model in my community,” he said.

Shereese Turner

TCR! Staff

“When the world is telling [me] to give up, I hear, ‘Try it again and don’t be discouraged.’ That’s what TCR! is all about.”



Mike Krivik

As the Director of Recruitment and Internships at Twin Cities RISE!, Shereese Turner is responsible for both getting participants in the door of TCR!, as well as sending them out on valuable internships.

In this multi-faceted role, Shereese uses local partnerships to recruit participants suited for TCR! and then puts their skills to work in the community. The internship program at TCR! provides participants with the opportunity to gain experience in professional settings, while also increasing their confidence on the job. “The internship program not only introduces opportunities to gain skills but allows them to see the importance of giving back by volunteering,” Shereese said.

Though her job spans many responsibilities, Shereese knows that the daily interactions with participants are some of the most important parts of her role. “TCR! works because of the dedication and the commitment of the staff, a contributing factor to our participants realizing their self-worth,” Shereese said.

The State of Minnesota has received \$7.24 back for every \$1 invested in TCR! over a 13-year period due to increased state tax receipts, reduced state subsidies and reduced recidivism related directly to Twin Cities RISE! graduates.

624%
Return on Investment

\$24,655
Post-Program

465%
Increase

\$7,125
Pre-Program

Average Change
in Income
Upon Graduation

Foundations that Stay Strong

In 2009, we profiled Kevin Sanders, a Basic Needs Supervisor at Sabathani Community Center. After coming to TCR! and learning Personal Empowerment, he found success and fulfillment in the workplace.

It’s not only the regular paycheck that has made an impact on his life. The foundational skills from TCR! have also transferred over to Kevin’s daily work serving others. “When I have to deal with 20-30 people on projects each day, I encounter all types of mannerisms. Empowerment helps me stay calm no matter what’s going on,” Kevin said.



Trevin Anderson



2010 Annual Report to Stakeholders Luncheon



Positive changes are on the horizon, according to Minneapolis City Council and TCR! Board Member Don Samuels. As keynote speaker at the Annual Report to Stakeholders Luncheon sponsored by General Mills, Samuels emphasized the good things ahead. “There’s a real palpable change happening in America... things are going to change for good. And Twin Cities RISE! is one of the organizations that has convinced me of this... failure is not an option.” TCR! graduates Antoine Perkins and Shauntina Beatty spoke of the changes in their lives, moving from job instability to long-term retention and the desire to give back to their communities. “I am happy to be able to give back to Twin Cities RISE! because they have given so much to me. As a result, my future looks so much brighter for my family and me,” Perkins said.



Left to Right: Keisha Powell, Human Resources Representative; David Abrams, Vice President of Human Resources; Peggy Reimer, Director of Talent Acquisition

North Memorial Hospital

Hiring Partner

"I really enjoy working with Twin Cities RISE!. What I am most impressed by is the degree of professionalism from everyone I work with there. They understand our business, respond to our needs, and maintain a level of professionalism in everything they do."

- Peggy Reimer, Director of Talent Acquisition

As a Twin Cities RISE! partner, North Memorial Hospital has provided valuable work experience for many TCR! participants through the internship program. Internships provide opportunities for participants to increase confidence, develop skills, and build resumes that are critical for their professional development. Because of the internship program, two TCR! participants are now part of the North Memorial team!

North Memorial is also an active member of the Employer Advisory Panel, a group of professionals that comes together from throughout the Twin Cities' business community to provide crucial feedback on TCR! curriculum to ensure that classes are market-driven. North Memorial assisted with developing curriculum for a Medical Terminology course and provided insight into the requirements and demands of the medical field.

The Twin Cities RISE! partnership with North Memorial strengthens both organizations, and this strength adds value to the community we share.

The following organizations have hired TCR! participants into Final Placement jobs (*2010):

AAA Minneapolis • ABM Janitorial Services • ABM Security Services • African American AIDS Task Force • African American Family Services • Airport Taxi, Inc. • Alliance One • Alliant Techsystems, Inc. • AlliedBarton Security Services • Allina Hospitals & Clinics • Ameriprise Financial, Inc. • AMPCO System Parking • Arc Greater Twin Cities • Armstrong Subway, Inc. • Artspace • As Soon As Possible, Inc. • Ascension Place, Inc. • ASP Screening • Asplundh Tree Expert Co. • AT&T • B.F. Nelson Corporation • Bailey Nurseries Inc. • Banta Catalog Group • Bellcomb Technologies, Inc. • Best Buy • Best Brands Corp. • Big Brothers Big Sisters of the Greater Twin Cities • Bon Appetit Management Company • Boston Scientific • Breaking Free • Bridging Inc. • Bro-Tex, Inc. • Cable Imaging Solutions • Catholic Charities of St. Paul and Minneapolis • Celestica • Central Roofing Company* • CH Robinson/ T-Chek Division* • Cheme Industries, Inc. • Community Action Partnership of Ramsey & Washington County • Conesco Finance Inc. • Courtyard by Marriott* • CPA Global • Crompton, Seager & Tuft, LLC • Crystal D. • CSL Behring • Cummins Power Generation • D. Brians Deli • Daily Work • Dakota Communities Inc.* • Data Recognition Corporation • Deluxe Corporation • Domestic Abuse Project • Dunganvin Minnesota, Inc. • Dunwoody Academy* • Ecolab • Electronic Communications Systems • Eureka Recycling* • Experior Assessments, LLC • Express Scripts • Faegre & Benson LLP • FBG Service Corporation • Federal Reserve Bank of Minneapolis • FedEx Kinko's • Financial Crime Services, LLC • Ford Motor Company • Gavzy Consulting • GCI Systems • General Mills • Goodyear • Green Tree Financial Corporation • Greyhound Lines, Inc. • Guthrie Theater • H.B. Fuller • Hanson Spancrete Midwest Co. • Hayes Residence • HealthEast Care System • HealthPartners • Hennepin County • Hennepin County Medical Center • Hilton Hotel* • HIREd • HMS Label Specialties, Inc. • Holiday Inn Select • Homeward Bound, Inc. • Honeywell • I.C. System • IKON • Independent Packing Services, Inc. • ING ReliaStar • IntellRisk Management Corporation • Imaginel Print Solutions* • iQor • Iron Mountain • J Knutson & Associates* • Jacobs Engineering Group, Inc. • Jacobs Trading Company • Japs-Olson Company* • Jerebeks Bakery* • Jimmy John's • Keller Fence Company - North, Inc. • Keystone Computer Solutions, Inc. • Kurt Manufacturing • Lason • Liberty Carton Co. • Liberty Diversified Industries • Lindquist & Vennum PLLP* • Liquor Barrel • Loaves and Fishes* • Lofton Labels, Inc. • Lowe Industries • Lubrication Technologies Inc.* • Lutheran Social Services • Macy's, Inc. • Magnum Tire Corp. • Marsden Building Maintenance, LLC • Meat Concepts • MEDTOX Scientific, Inc.* • Medtronic • Memorial Blood Centers of Minnesota • Mental Health Resources, Inc. • Merry Maids • Midwest Special Services, Inc. • Minneapolis Public Schools • Minneapolis-Saint Paul International Airport • Minnesota Dept. of Employment & Economic Development • Minnesota Dept. of Transportation • Minnesota Diversified Industries • Minnesota Grinding • Minnesota Life • Minnesota Public Housing Authority • Minnesota Wire & Cable Co. • Mission Foods • Mississippi Market Co-op* • MoneyGram • Mystic Lake Casino* • Nash Finch Company • National Car Rental • The NetWork for Better Futures • New Directions Inc. • New French Bakery • Normandale Community College • North Memorial Hospital* • Northland Securities Inc. • Northwest Airlines • NOW Micro • OffCenters* • Olympic Steel, Inc. • On Time Delivery Service • Open Arms of MN • Operation de Novo, Inc. • Opportunity Partners • Outsell, LLC • Packaging Corporation of America • Park Nicollet Health Services • Parkwood Shores Senior Campus* • Partners in Pediatrics, Ltd. • Peace Foundation* • Pearson Professional Center • People Serving People Inc. • Perkins Restaurant & Bakery • Phoenix Alternatives, Inc. • Pioneer Metal Finishing* • Presbyterian Homes & Services • Prudential Financial • Quality Machine of Iowa, Inc. • Rainbow Foods* • Randstand Temp Agency* • RBC Wealth Management* • Recycle Technologies • Regions Hospital • Regulus Group, LLC • Reliant Energy • Resource* • Restaurant Depot* • Reuben Lindh Family Services • Rich Business Systems • Room & Board • Sabathani Community Center Inc.* • Salvation Army Harbor Light Center* • Sam's Club • Sandcastle Child Care and Preschool • Satcom Marketing, LLC* • SCC Janitorial • Schroeder Company • Scoville Press, Inc. • Seagate Technology • Second Harvest Heartland • Securian Financial Group Inc. • Servisair • Shadin Company • Shakopee Mdewakanton Sioux Community • Smith Foundry Co. • Sodexo* • Speedway Super America • Spherion Temp - Ceva* • Sprint/Nextel • StarTribune • Stein Industries, Inc. • SterilMed* • Stock Roofing Company, LLC* • Strom Engineering Corporation • Success Computer Consulting • Summit Academy OIC • Sunrise Community Banks • SUPERVALU • Sustainable Resources Center • Target • TCF Bank* • The Design Group • The Goodin Company • The Hogan Company • The Home Depot • The John Roberts Company • The Link • The Marquette Hotel • The Network for Better Futures* • The Phoenix Residence, Inc. • The Sheffield Group • Twin Warner Cable • Total Solutions Group • Tube Bending Specialists • Turning Point, Inc. • Twin Cities Glass Block Inc. • Twin Cities RISE! • Twin Cities Stores, Inc. • U.S. Bank* • U.S. Department of Veterans Affairs • Union Pacific Railroad • United Resource Networks • United Stations Supply Co. • UnitedHealth Group • UnitedHealthcare • University of Minnesota* • University of Minnesota Medical Center - Fairview • Urban Homeworks • Valspar Corporation • Velocity Express Corporation • Verizon Wireless • Viacom Outdoor • Village Green Community* • Walbon & Co.* • Wal-Mart* • Way to Grow • Wayside House, Inc. • Wells Fargo Bank* • Western Bank • White Castle • WindRiver International LLC* • Women of Nations • YWCA of Minneapolis* • Zumbro House, Inc.

2010 Internship Sites:

Council Member Don Samuel's Office • Bridging, Inc. • City of St. Paul • Dress for Success Twin Cities • Eastside Neighborhood Services • Habitat for Humanity • Hmong American Partnership • Lindquist & Vennum, PLLP • Minneapolis Chapter of MAD DADS • MN Workforce Center Midway • Neighborhood Involvement Program • The NetWork for Better Futures • North Memorial Hospital • Open Arms of MN • PICA Head Start • Project for Pride in Living • Ready For Success • The Family Partnership • Sabathani Community Center • Sexual Violence Center • St. Anne's Place • The ReUse Center • Twin Cities Housing Development Corp. • Twin Cities RISE! • Wilder Foundation • WomenVenture

2010 Volunteers

Lowanda Aaron
Dan Abbott
Mary Adams
Kathy Agerbeck
Bretta Alexander
Ellie Aldredge
Phil Allen
Ruth Alliband
Tessa Alston
Amy Anderson
Jerry Anderson
Liz Anderson
Keith Bednarowski
Lois Bell
Rick Benish
Katie Bennett
Robert Bennett
Boni Berg
Kate Berman
Mike Bingham
Paige Bingham
Kate Borman
Liz Bornhofen
Sharon Bottorff
Scott Brophy
Blair Bury
James Cannon
Julia Carlson
Suzanne Carson
Mary Beth Chapel
Leslie Cherry
Bill Chickering*
Shawna Christensen
Bill Clark
Stephen Cole*
Compellent
Pat Cooper
Randolph Cooper
Pat Croal
Phil Davis
Jeff DeMars
Matt Drawz
Bernard Devereaux
Aaron Doollite
Danielle Ducharme
Mike Durkin
Mick Dyer
Judy Earling

Roycie Earvin
Anika Eide
Joan Estenson
Denise Felder
Angela Fisher
Nancy Fox*
Michelle French
Teri Fritsma
Nick Gallus
Nate Gansen
Andrew Geiser
Kelly Gillman
Rosemary Glover
Alison Goehle
Sharon Goens
David Goldstein
Debra Fisher Goldstein
Morris Goodwin, Jr.
Robin Gotler*
Harry Greenberg
Lisa Greene
Susan Greve
Molly Grove
Sue Hammersmith
Gretchen Hanson
Tom Hart
Sharon Hawkins*
Derek Hayes
Rachelle Hayes
Brad Hamling
John Herbes
Byron Hill
Diane Howard
Heather Hrdlicka
Tim Huston
Brant Igalbe
Abhi Jain
Joel Johnson
Barbara Jungbauer
Larry Kachina
Ken Kendle
Kelsey Kennedy
Kelly Kinsella
Morgan Kirkland
Alexander Kramarczuk
Shauna Kurtz
Diane Lawrence
Anne Leighton

Tony Leung
Phil Little
Lockheed Martin
Bob Macdonald
Muffy MacMillan
Rob Magers
Rebecca Martin
Trent Meidinger
Kara Miller
Scott Moesenthin
Rachel Monfils
Katie Mueller
Ann Murphy
Jed Norgaarden
Amanda Norman
Glenn Olson
Cindy Page*
Christine Page
Gabrielle Parish
Kim Peebles
Norman Peoples
Gloria Perez
Antoine Perkins
Dusty Perryman
Diane Peterson
Janice Petz
Verlynn Pinkney
Keisha Powell
Matt Pryor
Dave Pylipow
Ravi Rai
Leanne Rajtar
Boni Rhodes-Berg
Melissa Richardson
Tim Rogers
Latrena Robinson
Pam Rogers
Art Rolnick
Marilyn Rothschild
Steve Rothschild*
Dave Ruce*
Nicole Rucker
Casey Rusco
Tony Ryan
Cate Rysavy
Salo
Christine Sampson
Don Samuels

Kim Sapan
Robert Sayre
Jennifer Schmidt
Malana Schmid
Sam Schreiner
Jessica Schuppe
Don Sellke
Cynthia Shasky
Sonia Shewchuk
Kerri Simafranca
Bob Simon
Pam Siner
Pam Spies Solsvig
Mimi Stake
Lisa Starin
Chris Styring
Lidin Su
Brian Sullivan
Leslie Sullivan
Bill Surluga
Tom Swain
Greg Swoverland
Erik Thorsell
Hannah Tieszen
Toni Tinetti
Ron Tortelli
Terrell Towers
Susan Tuomeia
United Health Group
Andrew Upjohn
Bill Upjohn
David Upjohn
Mary Upjohn*
Jose Velez
Brandon Wachtel
Suzanne Walcher
Patrice Walton
Joanne Walz
Kimberly Washington
Claudia Wasserman
Serge Wetzel
Prince Wheaton
Keith Woodward
Mark Wooldridge
Debbie Woolhouse
Destiny Xiang
Mark Zappa
Judy Zimmer

Get Involved with TCR!

Volunteers are an important building block of Twin Cities RISE!. In 2010, more than 190 volunteers gave 2,300+ hours of time and energy to support TCR!. Volunteer opportunities include:

- Conducting mock interviews
- Assisting instructors
- Tutoring
- Assisting at special events
- Helping with recruitment
- Assisting with large mailings
- Speaking to a class
- Participating in an advisory group
- Connecting with employers
- Providing professional services, e.g. legal, public relations, business

For information on how to volunteer, e-mail volunteer@twincitiesrise.org or call (651) 336-6064.

*Donated 50+ hours

Trent Meidinger

TCR! Volunteer

"I volunteer at Twin Cities RISE! because it's an exceptional organization that turns the tables on poverty in our community. It's a privilege be part of it all."



Trent Meidinger is going on his third year as a TCR! volunteer and has been a trailblazer with his passion for the organization. He is enthusiastic, flexible, committed and understands TCR!'s goals. Add this to his deep belief that he, too, benefits from the experience, and we have one noteworthy volunteer!

Trent's first experiences as a volunteer focused on best interviewing practices, where he provided expertise in mock interviews. He has shared his admiration for TCR! in his blog and with others in the community, has supported marketing efforts and worked on TCR!'s Employer Advisory Panel.

Trent is a remarkable volunteer, and we celebrate him for the time he has dedicated to improving the lives of our participants and helping to enhance the presence of Twin Cities RISE! throughout the community.

Empowerment Institute (EI)

The Empowerment Institute is an external training arm of TCR! which extends our unique Personal Empowerment program to other nonprofits, corporations, schools and universities. Personal Empowerment is the backbone of the TCR! program and leads to higher levels of success in personal relationships, academic studies and professional careers. The Empowerment Institute is self-sustaining and helps fund other TCR! programming, while also creating a Personal Empowerment foundation for those outside of TCR!.

To contact the Empowerment Institute about training opportunities for your business, school or organization, e-mail empowerment@twincitiesrise.org or call 612-338-0295.

2010 Empowerment Institute Clients

American Indian OIC, Minneapolis
 Ameriprise Financial
 Association of Iowa Community Colleges
 Dakota County Sheriff's Office
 Harding High School
 Itasca Community College
 Jeremiah Program
 Kootasca Community Action Partnership
 Metropolitan State University
 Minneapolis Community and Technical College
 Minneapolis Public Schools Transitions Plus program
 The NetWork for Better Futures
 Northside Achievement Zone
 St. Paul Police Gang Commander's Unit
 St. Paul Public Schools
 University of Dubuque
 YWCA of Greater Minneapolis



A Department of Justice grant is enabling TCR! to demonstrate our ability to reduce recidivism for ex-offenders.

Impact on Recidivism Rates



The NetWork for Better Futures

EI Client

"Empowerment training is an effective and essential component of our transformation model and it plays a critical role in helping men succeed in their transition from a cycle of dependency to a new life of productivity and responsibility." - Steven Thomas

Steven Thomas, Founder of The NetWork for Better Futures, realized from the outset that the work they were doing with men recently released from incarceration would require dramatic personal change of the inner self. For that reason, he turned to Twin Cities RISE! and its life-changing curriculum, Personal Empowerment, and began a series of trainings for the men served by The NetWork. Now, every staff member at The NetWork has also been trained in Personal Empowerment and will model positive problem-solving attitudes. The NetWork is one more fully Empowered organization, leading the way in helping others realize success through self-awareness, self-control, personal responsibility, successfully engaging with others, and building and maintaining positive relationships.

2010 Financial Statement - Unaudited

Income Statement - Unrestricted*

Financial gifts/support	\$2,084,000
Government grants	642,000
Earned Income	699,000
Miscellaneous Income	36,000

Total unrestricted revenue \$3,461,000

Program service expenses	\$2,471,000
Management and general	415,000
Fundraising	368,000

Total unrestricted expenses \$3,254,000

Total unrestricted surplus \$207,000

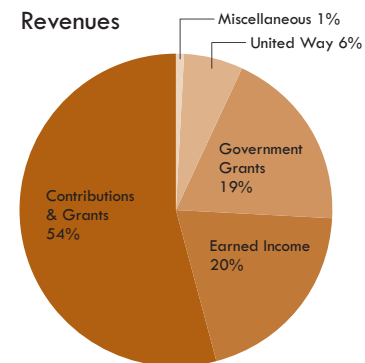
*does not include donated services and materials of \$90,000

Balance Sheet

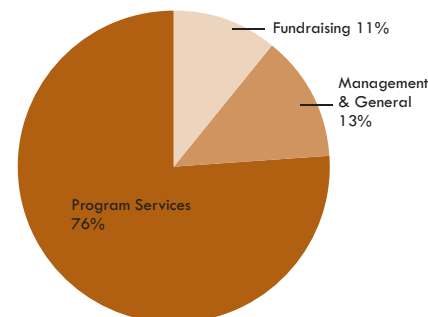
Temporarily restricted	\$391,000
Working capital	968,000
Designated for special purposes	535,000

Total net assets \$1,894,000

Revenues



Expenses



In Recognition of Sue Lehman

Twin Cities RISE! thanks Sue Lehman for her 14+ years of service as Finance Manager and congratulates her on her retirement. Sue's financial acumen, heart and good soul helped lead TCR! through tough times and times of great growth. Sue has left a legacy of resource stewardship for which we are grateful.

Contributors

Leaders Circle - Visionaries (\$50,000+)

Eugene U. and Mary F. Frey Family Fund of The Saint Paul Foundation*
 General Mills Foundation*
 The Medtronic Foundation
 Opus Foundation*
 Carl and Eloise Pahlad Family Foundation*
 Marilyn and Steve Rothschild*
 Ralph R. Kriesel Foundation of The Saint Paul Foundation*
 The Richard M. and Sandra J. Schulze Family Fund of The Saint Paul Foundation*
 Greater Twin Cities United Way*
 The Harry and Jeanette Weinberg Foundation, Inc.

Leaders Circle - Ambassadors (\$25,000 - 49,999)

Ameriprise Financial, Inc.*
 F.R. Bigelow Foundation*
 Greycouch Foundation
 The Minneapolis Foundation*
 Otto Bremer Foundation
 Smikis Foundation*
 Travelers Foundation*
 Wells Fargo Foundation
 Minnesota*

Leaders Circle - Stewards (\$10,000 - 24,999)

Anonymous (1)
 3M Foundation*
 Aloysius Foundation

Mary and Keith Bednarowski*
 Annelie and Shawn Bergerson
 Buuck Family Foundation*
 The Corlad Corporation*
 Ruth Stricker Dayton and Bruce Dayton*
 Julia W. Dayton*
 Deluxe Corporation Foundation
 Carol and Charles Denny*
 Ecolab Foundation*
 General Mills, Inc.
 George Family Foundation*
 Jeff George
 Sharon and Bill Hawkins*
 Verne Johnson*
 The VCJ Foundation*
 Muffy MacMillan
 Marcus McCoy Foundation*
 Dick and Joyce H. McFarland
 Family Fund of The Minneapolis Foundation*
 McKinsey & Company, Inc.
 Medtronic, Inc.
 Casey Albert T. O'Neil
 Foundation*
 Wendy Bennett and Ken Powell; JF Fund of The Minneapolis Foundation*
 RBC Foundation - USA*
 Jennifer and Hervé Sarteau*
 Schall Family Fund of The Minneapolis Foundation*
 Stephanie Simon and Craig Bentsdahl*
 Soran Family Foundation Fund of The Saint Paul Foundation*
 Thrivent Financial For Lutherans
 Foundation*
 Diana and Ron Tortelli*
 U.S. Bancorp Foundation*

Leaders Circle - Benefactors (\$5,000 - 9,999)

Alliance Bernstein
 Kate and Art Berman;
 Berman Family Fund of Fidelity Charitable Gift Fund
 Marlene and Ned Bixby*
 COUNTRY Financial
 Jack and Claire Dempsey Fund of The Minneapolis Foundation*
 Jaye F. and Betty F. Dyer
 Foundation*
 The Jack and Bessie Fiterman
 Foundation
 Hawn Family Fund of The Minneapolis Foundation*
 Hays Companies by Jim Hays*
 K.A.H.R. Foundation
 Land O'Lakes, Inc. Foundation
 Anita and Rick Leggott*
 Lyman Lumber Company
 Foundation*
 Sue and Bob Macdonald*
 Kathi and Steven Machle
 Kay and Mike McCarthy*
 Marilyn and Glen Nelson*
 Bill and Barbara Pearce Fund of The Minneapolis Foundation*
 Mary and Dave Pylipow*
 Paul and Mary Reyelts Fund of The Minneapolis Foundation*
 Leah and Scott Rued*
 Securian Foundation*
 Judy and Steve Shank
 Chris and Hank Shea*
 SUPERVALU Foundation on behalf of SUPERVALU Inc.*
 Target*
 Thomson Reuters*

Mary W. Vaughan Fund of The Minneapolis Foundation*
 Watson Family Fund of The Minneapolis Foundation*
 The Whitney Foundation*
 Margaret and Angus Wurtele*
 Xcel Energy Foundation

Leaders Circle - Sustainers (\$2,500 - 4,999)

Accredited Investors
 The Allen Family Fund of the Vanguard Charitable Endowment*
 Laurie and Jeffrey Anderson
 Julie M. and Douglas M. Baker, Jr. Fund of The Minneapolis Foundation*
 Sue and David Bennett Family Fund of The Minneapolis Foundation*
 Paige and Mike Bingham*
 Margee and Will Bracken; Will Bracken Family Foundation*
 Ellen and Jan Breyer;
 Breyer Family Fund of The Minneapolis Foundation*
 Danis and Richard Byrd*
 Carmen and Jim Campbell;
 Campbell Foundation
 Chorzeempa Family Foundation*
 Michael V. and Ann C. Ciresi
 Foundation
 Jane Emison
 Faegre & Benson LLP
 Joyce and Hal Field*
 Penny and Bill George*
 Greystone Foundation by
 Walter McCarthy and
 Clara Ueland*

Mary and Larry Haeg
 Sue K. Hammersmith and C. Allyn Uniacke
 Megan and Derek Hayes*
 Shirley and David Hubers;
 David and Shirley Hubers
 Martha Goldberg Aronson and Dan Aronson
 Bell Family Charitable Gift Fund of the Fidelity Charitable Gift Fund*
 Best Buy Co., Inc.
 Gary and Sally Blum
 Broadwaters Foundation by Val and Ed Spencer and Family*
 Brookfield Commercial Properties, Inc.
 John and Joan Brooks
 Jeffrey and Gretchen Brown*
 Burdick-Cradick Family Foundation*
 Calypso Control Systems, LLC
 Carol and Ted Cushman*
 Marilyn Dahl*
 Celest and James Dallas
 Edward and Sherry Ann Dayton*
 Karol and Richard Emmerich;
 The Emmerich Foundation*
 Juli and Tom Erdmann*
 Cecy and Wiley FASTER*
 Nikki Sorum and Simon Foster
 Friendly Fund of Fidelity Charitable Gift Fund

* given continuously to TCR! for five or more years

Contributors

Leaders Circle - Partners (\$1,000 - 2,499)

Anonymous (2)
 Jennifer and David Antila*
 Marsha Goldberg Aronson and Dan Aronson
 Bell Family Charitable Gift Fund of the Fidelity Charitable Gift Fund*
 Best Buy Co., Inc.
 Gary and Sally Blum
 Broadwaters Foundation by Val and Ed Spencer and Family*
 Brookfield Commercial Properties, Inc.
 John and Joan Brooks
 Jeffrey and Gretchen Brown*
 Burdick-Cradick Family Foundation*
 Calypso Control Systems, LLC
 Carol and Ted Cushman*
 Marilyn Dahl*
 Celest and James Dallas
 Edward and Sherry Ann Dayton*
 Karol and Richard Emmerich;
 The Emmerich Foundation*
 Juli and Tom Erdmann*
 Cecy and Wiley FASTER*
 Nikki Sorum and Simon Foster
 Friendly Fund of Fidelity Charitable Gift Fund

G&K Services Foundation
 GF Parish Group
 Scotty and Peter Gillette*
 Mary and David Goldstein*
 Morris Goodwin, Jr.;
 Goodwin-Lindsay Family Fund of The Minneapolis Foundation*
 Elizabeth and Michael Gorman*
 Julie and Will Heupel;
 Will and Julie Heupel
 Charitable Fund of Fidelity Charitable Gift Fund
 Twanya Hood Hill and Byron Hill
 Hoganader Family Foundation
 Penny and Steven Hornig
 James and Ann Howard Family Fund of The Minneapolis Foundation*
 The Hubbard Broadcasting Foundation*
 Hutter Family Foundation*
 Heinz Hutter*
 Celest and James Dallas
 Edward and Sherry Ann Dayton*
 Karol and Richard Emmerich;
 The Emmerich Foundation*
 Juli and Tom Erdmann*
 Cecy and Wiley FASTER*
 Nikki Sorum and Simon Foster
 Friendly Fund of Fidelity Charitable Gift Fund

Peggy and Dave Lucas*
 Jennifer and Tres Lund
 Leland T. Lynch and Terry Saario Fund of The Minneapolis Foundation*
 Malt-o-Meal
 Robert and Polly McCrea
 Family Fund of The Minneapolis Foundation
 Ixchel McKinzie*
 Mariko and Bill McLaughlin
 Family Foundation of Minnesota Community Foundation*
 Joan and Tom Mears
 Lori and Dave Millard
 Mr. and Mrs. Douglas A. Milroy
 Fund of the Fidelity Charitable Gift Fund*
 Jodi and Michael Mooney
 Joe and Kathy Mucha*
 Mary Frances Mullin
 Kathy and Tim Murnane
 Ann and Richard Murphy
 Oak Grove Foundation by Jack and Christine Morrison*
 Jane and Bob Oberender
 Shawn and Becky O'Grady
 Rhonda and Rory O'Neill Fund of the Fidelity Charitable Gift Fund*
 Peravid Foundation
 Buzz and Carolyn Pierce
 Chris and Anne Policinski

Mary Ann and Scott Portnoy
 Pratt Family Fund of The Minneapolis Foundation*
 Alvina Janda and Bill Riley
 Becky and Mark Roloff
 Ruth Rothschild*
 Sharon and Bob Ryan*
 Malana and Jeff Schmidt*
 Peggy and John Scholz
 Bob Sheehy and Andrea Kmetz-Sheehy
 Sheldon Family Fund of Fidelity Charitable Gift Fund
 Barbara B. Sill
 Peg Skold
 Warren and Mary Lynn Staley
 Stone Pier Foundation*
 Bob and Celia Stremmater
 Ed and Virginia Stringer
 Success Computer Consulting
 by Erik Thorsell
 Arlene and Tom H. Swain*
 TCF Foundation
 Leslie and Wayne Teddy
 Nancy and Bruce Thomson Fund of The Minneapolis Foundation*
 Kate Hebson and Mark Tierney*
 Mike Tierney
 Marcia Townley
 United Health Group
 Vantine Family Fund of The Minneapolis Foundation*

Sandra L. Vargas Fund of The Minneapolis Foundation*
 Lynn and Richard Voelbel
 Von Blon Family Charitable Trust*
 Wahlstedt Family Fund of The Saint Paul Foundation*
 Suzanne and Eric Walcher
 Leona Werner and Robert Waldron*
 Sheila and Patrick Walsh*
 The Weiser Family Foundation*
 Mary and Jeff Werbalowsky
 Jean D. Wilson*
 Jill and Scott Wine
 Stephanie and John Zugswert

Advocates Circle - Supporters (\$500 - 999)

Anonymous (4)
 Katie and Brendan Abrams
 Linda and Jerry Anderson*
 Carole and Doug Baker Fund of The Minneapolis Foundation*
 Bank of America
 Lynnell Mickelsen and John Bellaimey
 Linda and Henry Berman

* given continuously to TCR! for five or more years



Sharon and Bill Hawkins Donors

"My husband and I are committed to TCR! because its outcomes are extraordinary and measurable. TCR! takes people experiencing poverty and despair and helps them become strong, proud and productive members of society. I think of TCR! as a beacon, a light in a stormy sea."

Sharon and Bill Hawkins are the type of stellar donor that all organizations hope for. For five years the Hawkins have consistently supported Twin Cities RISE! financially. They have encouraged their children and colleagues to donate and volunteer. Sharon herself is a TCR! Board Member and was the pioneer for our now annual fundraising event, Music on the Mississippi. It is through the Hawkins' efforts and the efforts of many of their peers that we have been able to take our fall fundraising to a new level.

Music on the Mississippi 2010



Left to right: Graduates Nayana Persaud and Terone McCambry, Frank Vascellaro, and Graduate Kevin Sanders

Once again we had Good Food, Good Wine, Good Music and Good Times at the Twin Cities RISE! Music on the Mississippi fundraising event. Held at St. Paul's James J. Hill Library in October, the event was co-chaired by Sharon Hawkins, Cindy Page, and Mary Upjohn, and co-hosted by Mayors Chris Coleman and R.T. Rybak. Guests were entertained by Elvis and some music of Memphis by Mick Sterling and his band, a silent auction, and inspirational stories of TCR! grads as interviewed by Frank Vascellaro.

Thanks to our Music on the Mississippi Committee: Amy Anderson • Mary Beth Chapel • Joan Estenson • Nancy Fox • Michelle French • Nate Gansen • Nick Gallus • Rosemarie Glover • Sharon Hawkins • Bob Macdonald • Muffy MacMillan • Ann Murphy • Amanda Norman • Cindy Page • Marilyn Rothschild • Malana Schmidt • Mimi Stake • Tom Swain • Bill Upjohn • Mary Upjohn • Suzanne Walcher

Thanks to our Music on the Mississippi Sponsors: Mary & Keith Bednarowski • Stephanie Simon & Craig Bentsdahl • Muffy MacMillan • Cindy & Greg Page • Marilyn & Steve Rothschild • Leah & Scott Rued • Mary & Bill Upjohn



Contributors

Susan Boren*
BTC Management Inc.
by Daniel Pennie
Jeannie Buckner
Lynn Casey and Mike Thornton
Ann and Bruce Christensen
Chubb Group of Insurance
Companies*
Stephen L.Cohen
John Colbert
Douglas and Sands Coleman
Fund of The Minneapolis
Foundation*
Kevin and Katie Conneely
Betsy and Jason Conway
Steve and Nimi Fisher Family
Fund of The Minneapolis
Foundation
Mary and Jeff Fox
Vincent Fuller
Kim and Charlie Gits
Suzanne and Fred Gobel*
Dale and Debbie Goldsmith
Goldstein Gift Fund of The
Fidelity Charitable Gift Fund
Laurie and Ed Greeno*
Linda and John Haugen
Lucy and Jeff Heegaard
Roger F. Heegaard Family Fund
of The Minneapolis
Foundation*
Barbara Forster and
Larry Hendrickson
Thomas Herr
Patty and Tom Holloran*
Paul Johnson
Joy and Sidney Kaplan
Don and Judy LeWin Family
Fund of Fidelity Charitable
Gift Fund
Little & Company
by Monica Little
Christen Loosmore
Sarah Lutman and
Robert Rudolph*
Camhong Ly
David and Beth Lyman*
Dave and Kathleen MacLennan
Penny Meier
Metropolitan State University
Foundation
John Nealon*
Julie A. Nelson*
Pam and Mike Oesterreich*
Diane and Brett Oslund
Gabrielle and David Parish
Kris Petersen
Polaris Industries, Inc.
Josh Resnik
Lisa Adams and James Rowe III
Shannon and Todd Runge
Harriet and Edson Spencer
Foundation*
James Thomson
Lesla and John Tieszen
Emily Anne Staples Tuttle Fund
of The Minnesota Community
Foundation*
Urban Adventure Fund of
Greater Twin Cities
United Way*
Terry Van Vuren
Mary and Doug Watson
Katherine G. Whittington

Julie Williams
Irma M. Wyman
Kathleen and James Zavoral*

**Advocates Circle -
Friends
(Up to \$499)**
Anonymous (56)
Tim Agen
Cathy Anastasion
Amy Anderson
Amy L. Anderson
Nathan Anderson
Bridget Axelson
Audrey Bailey
Keith Barber
Roy Barker, Jr.
Carol Barnett
Dana and David Barry
Sharon Bartels
Grace Bartholet
Patrick and Andrea Bassett
Emily Bauer
Lucy Bauer
Sally and James Beloff
Ray and Shirley Bentdahl
Bercom International, LLC
Rebecca Berger
Bernice Berman
Zerihun Beyene
Katie Mohammad-Zadeh and
Paul Bieganski
Mary and Bruce Bildsten
Joan and Reid Billig*
Bill Blanski
Brigitte Boltz
Andrew Brainerd
Keri and Mychal Brenden
Molly Broder
Scott Brophy
Barbara Brown*
Paul and Shannon Burke*
Scott Burns
Julie and David Burton
Carolyn Williams and
James Butcher
Melissa and Uri Camarana
Kathleen Glover and
Daniel Carr*
Gerald and Sarah Caruso Fund
of The Fidelity Charitable
Gift Fund*
Virginia and Charles Cassidy
Christina and Drew Catron
Lisa Cavaliere
Mark Chalpin
Mary Beth and Norm Chapel
Mary Kay Chirhart
Ryan and Blair Collins
Angie and T.J. Conley
Joy and Page Cowles
Dr. James and Roberta Craig*
Susan Crao
Tom and Ellie Crosby, Jr.*
Susan Davies
Jefferson Davis
Phillip Davis*
Melanie and Cary Demont
Kathy McGarry Dougherty
and Steve Dougherty*
Matt Drawz
Martin Duchow

Jane Duncan
Barbara and Phil Dunlay
Paul Erickson
Pixie Martin and Jay Erstling
Nan Eserkald
Sarah Truesdell and
David Etzweiler
Judith and James Fetterly
Debra Fisher Goldstein and
Harvey Goldstein
Grace Forcica
Susan Forster
Nancy Fox
Kevin Franklin
Leslie and Alain Frécon
Lan Freitag
Sally and Gerald Friedell
Marie and Fred Friswold*
Teri Fritsma
Martha and John Gabbert*
Barb and Bill Gabler
Queenie and Paul Gam
Kara and Eric Balcerzak*
Lois and Richard Gehrman*
Rosemarie and Ron Glover
Dr. Stanley M. and
Luella G. Goldberg
A. Nancy Goldstein
Rebecca Gordon
Tracy Gradford
Jesse Gritner
Joanne Groten
Jenny and Steve Gullickson
Sherry Gwegorryn
Amanda Hane
Jolene and Tom Hart
Barbara Haselbeck
Elizabeth Hawkins
Linda Heathman
Tonya and Paul Hendrickson
Lorraine Henjum
James Hill
Karen and Paul Hillen
Keith Holloman
Mary Ann Holman-Turner
Spencer and Nancy Holmes
Hunegs, Leneave & Kvas,
Attorneys at Law
Ronald and Renee Hunter
Tish and Rob Hutter
Shelley Jacobson
Beth and Kirby Johnson
Lori and Joel Johnson
Susan Johnson
Carolyn Jones
Elisabeth and Walter Jordan*
Melissa Kaercher
John Kenney
Morgan Kinross-Wright
Jolie and Steve Klapmeier
Andrea and Benjamin Knoll
Charitable Gift Account of
Schwab Charitable Fund
Alexander Kramarczuk
Clare and Robert Kreuser
Leah Krotzer
Anita and Myron Kunin
Debra Langan
Hans Larson
Marjorie Latus
Kait Laufenberg
Diane Lawrence
Mary and Barry Lazarus
Laura and Jack Lee

Jessica Lehrke
Leonard, Street and Deinard
Suzanne Leonard
Nelson Leung
Patrick Leung
Ron Leung
Liberty Diversified International
Dick and Peg Lidstad*
John and Nancy Lindahl
Margaret Schwarz and
Walter Low
Andrew and Ellen Luger
Thomas Lyons
Linda Meletzke
Diane Malone
Josephine Marchetti
R. Lynn Markle
Sarah Marquis
Rafael Martinez
Kim Matheson
Barbara McBurney*
Polly McCormack and
Keith Engel
Andrea McCreedy*
Lucy McDonald
Shefali Mehta
Trent Meidinger
Merrill Lynch
Erica Gordon
Cynthia Micolchick
Laurie Miller
Jeryl Millner
Minnesota Wire & Cable Co.
Charitable Giving Fund of
The Saint Paul Foundation*
Peter Munsil
Tim and Kristi Nasby
Nelson, Tietz & Hoye, Inc.
by Russ Nelson*
Sandra Neren
Addie Ng
Jed Norgaarden
Kendall and Jay Nygard
Kara O'Brien
William O'Brien
Lisa Ofstedal
Heather Oftedal
Jill and Bob Oleisky
Marcia and Allen Oleisky
Heather Olson
Holly Osterland
Michael and Denise Overline
Russell Packer
Heather and Jeff Page
Julia and Brian Palmer*
Julia Parnell
Kathy and Deryl Patterson
Kara Pfister
Nancy McGlynn Phelps and
James Phelps
Stephen Phen
Piper Jaffray
Plymouth Church
Lori Pomroy*
Jody and Octavio Portu
Theresa Powell
Lisa Ann Pressamarita
Susie and Chris Preston
Val and Ralph Pruitt*
Susan Cushman and
Charlie Quimby
Ann and Kevin Quiring*
Mary and Jim Radomski
Norma and Robert Ramsay
Jennifer and Christopher Reedy

Lewis and Constance Remele
Paige and Tom Renard
Carleen Rhodes
Angela and Bill Rice
Mary and J. Peter Ritten*
Paula and Roger Roe
Sheila and John Ross
Bruce and Ellen Rothschild
Frank Rothschild
Audrey and James Rothschild
Anne and Steve Ryan
Cathryn Rysavy
Susan and Bill Sands
David Schaal*
Randall Schmidt*
Amey Schnabel
Ben Schnabel
Kathleen Schultz
Joe Selvaggio*
Gail Shore
Mariana and Craig Shulstad*
Dwaine Simms
Danielle Simons
Leanne Skjervold
Kareem Smith
Susan Spero
Miriam and James Stake
Fred Steimann*
Mary Kay and Gary Stern
Robin and David Sternberg
Patty and Jeff Stewart
Jack Stuart
Catherine Sullivan
James Sullivan
Leslie and Tom Sullivan
Michelle Sullivan
Sun Life Financial
Pamela Swanson
Patricia Sykes
Jason Terhune
Karen Wilson and Paul Thissen
Donna Zimmerman-Tremmel
and Jon Tremmel
Parker and Albert Trostel
Trevor Tungseth
Shereese Turner
Twice the Gift by
Partnership Resources
Suzanne and John Van Dyck
Dawn Vassar
Susan Vickerman
Gary Vig
Rosemarie Voigt
Clara Walter-Marchetti
Ruth and David Waterbury*
John Watson
Scott and Marty Weicht
William Weir
Wernke Family Fund of Fidelity
Charitable Gift Fund*
Joy and John Wetzel
Carl P. Whaley
What Really Works
Kelly and John Wheaton
Michelle and David Whitman
Katherine Wilson
Isabella Wong
Christy Yakei
Elsie Yan
Justin Yunke
Rob and Jessica Zeaske

* given continuously to TCR! for five
or more years

**Organizations that
Matched Gifts**
Anonymous
3M
Alliance Bernstein
Ameriprise Financial, Inc.
Bank of America
Bercom International, LLC
Merrill Lynch
Donor Advisor Co-Investment
Fund of The Minneapolis
Foundation
Piper Jaffray
Polaris Industries, Inc.
Sun Life Financial
Thomson Reuters
Thrivent Financial for Lutherans
United Health Group

Recognition Gifts
**In Honor of Ellie and
Whit Pidot**
Anonymous

**In Honor of Joyce and
Hal Field's Anniversary**
Suzanne Leonard

**In Honor of Marilyn and
Steve Rothschild**
Accredited Investors

In Honor of Steve Rothschild
Plymouth Church

**In Honor of Steve Rothschild's
Birthday**
Audrey and James Rothschild
Ellen and Bruce Rothschild

**In Honor of Twin Cities RISE!
Staff Members**
Erica Gordon

**In Memory of
Carol Lew Leung**
Anonymous(2)
Paul Erickson
Queenie and Paul Gam
Dale and Debbie Goldsmith
Hunegs, Leneave & Kvas,
Attorneys at Law
Jolie and Steve Klapmeier
Clare and Robert Kreuser
Leonard, Street and Deinard
Nelson Leung
Patrick Leung
Ron Leung
Addie Ng
Jill and Bob Oleisky
Marcia and Allen Oleisky
Isabella Wong

**In Memory of
James R. Hawkins**
Christine and Jeffrey Rotsch

In Memory of Keri Kohut
Julia Parnell

In Memory of King Doyle
Patrick and Andrea Bassett
Christine and Jeffrey Rotsch

In Memory of Robert Berman
Bernice Berman

**Donated Goods &
Services**
Ann Taylor Loft
Anthropologie
Karen Bachman
Bagollitas by Janice, LLC
Banana Republic
The Basilica of Saint Mary
Patrick Bassett
Beaujo's Wine Bar & Bistro
Belleson's Mens
Benesty, Inc.
Kate and Art Berman
Big Hand Therapy
Bluebird Boutique
The Bookcase of Wayzata
Ellen and New Workshop
Brave Jan Breyer
Broders*
Bumbershute
Cafe Maude
Canoe Bay
Chantassen Dinner Theatres
Mary Beth and Norm Chapel
Chico's
Children's Theatre Company
Cigar Jones
Comm-N Solutions, LLC
Cooks of Croux Hill
Dana's Apparel
Michael Davis
Evergreene Jewelers
Faegre & Benson LLP
Mimi Fisher
Fringe
Nick Gallus
Penny and Bill George
Rosemarie and Ron Glover
A. Nancy Goldstein
Grethen House
Guthrie Theater
Sue Hammersmith and
Alynn Uniacke
Haskell's, The Wine People!
Sharon and Bill Hawkins
Derek & Megan Hayes
Heidi's Lifestyle Gardens by
Heidi Heiland
Hell's Kitchen
The House of Amore & Fede
Hot Mama
il Vostro Boutique
Shelley Jacobson
Clarence Jones
Josten's
Joy & Sid Kaplan
KEEN
Chris Lacki
LadyLipper Boutique
Anita and Rick Leggett
Jessica Lehrke
Library Foundation of Hennepin
County
Lili; A William and Friends
Salon
Peter Lilienthal
MacPhail Center for Music
The Marquette Hotel
Toby McCracken
Joan and Tom Mears
Medtronic, Inc.
Metropolitan Council
Jobseekers Program

Minneapolis Institute of Arts
Minnesota Vikings
Minnesota Children's Museum
Minnesota Twins
Minnesota Wild
Minnesota Public Radio
Mintahoe Catering & Events
N Etc
Ordway Center for the
Performing Arts
The Park Tavern
Pink Cloud Massage
Red Wing Brands of America
Marilyn and Steve Rothschild
Saint Paul Chamber Orchestra
The Saint Paul Hotel
Salut Bar American
Malana and Jeff Schmidt
Science Museum of Minnesota
Cathy Lawrence and Lee
Sheehy
Skin Therapease
Spalon Montage
Mimi and James Stake
Boyd Stofer
Summit Brewing Company
Sun Country
Sur La Table
Sweet Retreat - Cupcake
Boutique
Talbots
Title Nine
Tomboy Tools, Inc.
Uffdaa Wear
Julie and Bill Upjohn
Frank Vascellaro and Amelia
Santaniello
Vincent - A Restaurant
Suzanne and Eric Walcher
WCCO News
Julie and Keith Woodward
Words at Work
YUM! Kitchen & Bakery
Zenon Dance Company &
Dance School

Twin Cities RISE! has taken
every measure to ensure the
accuracy of the list printed
in this Annual Report. We
apologize if we overlooked any
organization or individual and
ask that you please advise us
of any errors so we may correct
our records and recognize you
appropriately.

Contributors

*“Thank you
Twin Cities RISE!
These classes have
taught me so much
about myself and
unlocked all the
potential within me.
I learned how to build
confidence and self-
assurance. Everything
starts with me.
I can do it.
I will do it.
I will be successful.”*
- Twin Cities RISE!
participant

**For information on investing in Twin Cities RISE! with a
financial gift, e-mail giving@twincitiesrise.org.**

**For general information call 612-338-0295 or
e-mail info@twincitiesrise.org.**

2010 Board of Directors

David Abrams*
Vice President
North Memorial Health Care

Keith Bednarowski, Treasurer
CEO
Adler Capital Management, L.L.C.

Art Berman, President
CEO
Twin Cities RISE!

Michael C. Bingham
Chief Advancement Officer
Presbyterian Homes & Services

Paige E. Bingham
Program Officer
Medtronic Foundation

David J. Goldstein
Attorney & Shareholder
Littler Mendelson P.C.

Morris Goodwin, Jr., Secretary
Chief Director
Wilder Foundation

Sue Hammersmith*
President
Metropolitan State University

Sharon Hawkins
Community Volunteer

Derek Hayes
Senior Vice President
Wells Fargo, N.A.

Byron K. Hill
Director
Honeywell International

Tony Leung
Hennepin County District Judge
Hennepin County Court System

Lynn Littlejohn*
Director of Community Affairs
Mortenson Construction

Dave Pylipow
Executive Vice President
SUPERVALU

Steven M. Rothschild, Chair
Founder
Twin Cities RISE!

Don Samuels
Council Member, 5th Ward
City of Minneapolis

Malana A. Schmidt, Vice Chair
Vice President (retired)
Greater Twin Cities United Way

Sonia Shewchuk
Partner
Faegre & Benson, L.L.P.

Tom Swain
Executive Vice President (retired)
Travelers

Keith A. Woodward
Senior Vice President
General Mills, Inc.

*Retired from board in 2010

Director Emeritus

Robert Sayre, US Bancorp (retired)
Ron Tortelli, SUPERVALU (retired)

Advisory Council

Phil Davis, MCTC
Gloria Perez, Jeremiah Program
Art Rolnick, Humphrey Institute
Brian Sullivan, SterilMed, Inc.
Bill Srvluga, WJS Consulting

2010 Development Committee

Keith Bednarowski
Art Berman
Kate Berman
Michael Bingham
Paige Bingham, Chair
Sharon Hawkins
Derek Hayes
Bob Macdonald
Steve Rothschild
Malana Schmidt
Tom Swain

2010 Employer Advisory Panel

Tesha Alston, 3M
Robert Bennett, Eureka Recycling
Blair Bury, Midwest Asphalt Corp
Julia Carlson, Wells Fargo Bank
Jeff DeMars, The Hilton Hotel
Denise Felder, iSEEK Solutions
Teri Fritsma, iSEEK Solutions
John Herbes, Wells Fargo Bank
Brant Igalsbe, GreenPOWER
Joel Johnson, Sunrise Community Banks
Rob Magers, Midwest Asphalt Corp
Trent Meidinger, Ameriprise Financial
Katie Mueller, Industrial Staffing
Diane Peterson, Cummins Power Generation
Keisha Powell, North Memorial Hospital
Matt Pryor, Cub Foods
Leanne Rajtar, Hennepin County HR
Terrell Towers, South Minneapolis Work Force Center
Jose Velez, GreenPOWER
Joanne Walz, The Minneapolis Foundation
Serge Wetzels, 3M
Mark Zappa, Ramsey County WFC

800 Washington Ave N
Suite 203
Minneapolis, MN 55401
612.338.0295



www.twincitiesrise.org

460 Lexington Pkwy N
St. Paul, MN 55104
651.603.8520